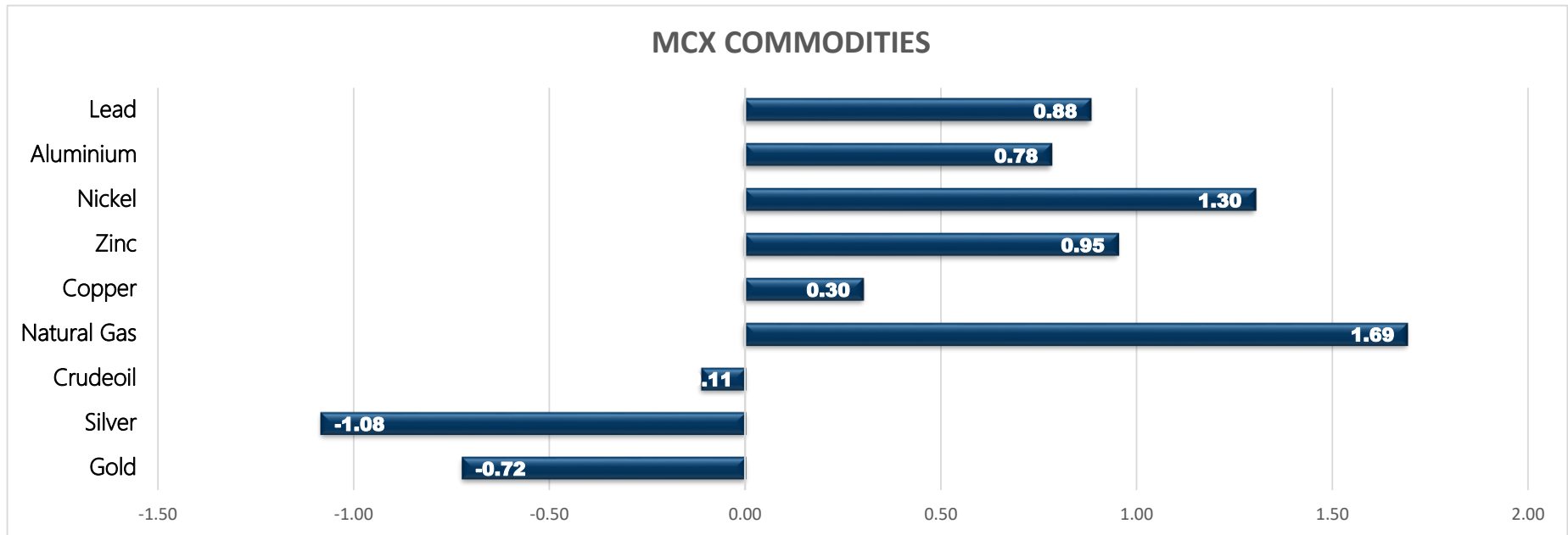


Commodity	Close	% Change
Gold	46899.00	-0.72
Silver	69372.00	-1.08
Crudeoil	4364.00	-0.11
Natural Gas	222.60	1.69
Copper	646.80	0.30
Zinc	228.65	0.95
Nickel	1365.70	1.30
Aluminium	168.45	0.78
Lead	172.85	0.88

Commodity	Ltp*	% Change
Gold\$	1793.47	-0.04
Silver\$	27.28	0.25
Crudeoil\$	60.05	0.98
Natural Gas\$	3.13	7.45
Lme Copper	8422.00	-0.06
Lme Zinc	2837.00	-0.23
Lme Nickel	18775.00	-0.29
Lme Lead	2110.50	0.12
Lme Aluminium	2087.00	-0.02

Economical Data	
EUR	German 30-y Bond Auction
USD	Core Retail Sales m/m
USD	Retail Sales m/m
USD	Core PPI m/m
USD	PPI m/m
USD	Capacity Utilization Rate
USD	Industrial Production m/m
USD	Business Inventories m/m
USD	NAHB Housing Market Index

MCX COMMODITIES



MCX MARKET SYNOPSIS

Contract	Open	High	Low	Close	Rs Chg	% Chg	Volume	OI	% Chg
Copper Feb	647.00	648.40	641.05	646.80	1.95	0.30	14504	3697	-5.74
Copper Mar	647.00	647.50	641.80	646.80	2.25	0.35	1369	1670	19.89
Zinc Feb	226.50	229.10	225.10	228.65	2.15	0.95	10325	2169	9.21
Zinc Mar	222.60	224.25	221.45	223.95	1.25	0.56	1438	2034	43.64
Nickel Feb	1351.90	1367.20	1341.00	1365.70	17.50	1.30	9878	1908	6.06
Nickel Mar	1357.10	1374.80	1350.30	1374.00	18.10	1.33	582	633	24.12
Aluminium Feb	167.60	168.65	167.00	168.45	1.30	0.78	1822	698	-13.93
Aluminium Mar	166.00	167.10	165.85	166.90	0.75	0.45	118	162	14.08
Lead Feb	171.40	173.55	170.10	172.85	1.50	0.88	3538	631	19.51
Lead Mar	168.10	169.30	167.10	168.05	0.55	0.33	118	159	9.66

MCX PIVOT

Contract	Sup - 3	Sup - 2	Sup - 1	Pivot	Res - 1	Res - 2	Res - 3	OI Status
Copper Feb	635.00	638.00	642.40	645.40	649.80	652.80	657.20	Short Covering
Zinc Feb	222.10	223.60	226.10	227.60	230.10	231.60	234.10	Fresh Buying
Nickel Feb	1322.60	1331.80	1348.80	1358.00	1375.00	1384.20	1401.20	Fresh Buying
Aluminium Feb	165.80	166.40	167.40	168.00	169.00	169.60	170.60	Short Covering
Lead Feb	167.50	168.80	170.90	172.20	174.30	175.60	177.70	Fresh Buying

INTERNATIONAL MARKET SYNOPSIS

Commodity	Open	High	Low	Ltp*	Rs Chg	% Chg	LME STOCKS	
LME Copper	8395.00	8437.00	8350.00	8427.00	-5.00	-0.06	LME Copper	-525
LME Zinc	2844.00	2844.00	2817.00	2843.50	-6.50	-0.23	LME Zinc	-1025
LME Nickel	18625.00	18860.00	18510.00	18830.00	-55.00	-0.29	LME Nickel	-66
LME Lead	2115.50	2123.00	2102.50	2108.00	2.50	0.12	LME Lead	5175
LME Aluminium	2082.50	2089.50	2072.00	2087.50	-0.50	-0.02	LME Aluminium	-6850

INTERNATIONAL PIVOT

Commodity	Sup - 3	Sup - 2	Sup - 1	Pivot	Res - 1	Res - 2	Res - 3
LME Copper	8285	8318	8372	8405	8459	8492	8546
LME Zinc	2799	2808	2826	2835	2853	2862	2880
LME Nickel	18257	18383	18607	18733	18957	19083	19307
LME Lead	2079	2091	2099	2111	2120	2132	2140
LME Aluminium	2059	2066	2077	2083	2094	2101	2112

COPPER

Copper trading range for the day is 638-652.8.

Copper prices gains driven by expectations of stronger demand and tight supply.

Global copper production declines 2% in 2020 – report

Light trading is likely to persist with markets in China, the world's biggest metals consumer, closed for the Lunar New Year holiday until Feb. 17.

Warehouse stock for Copper at LME was at 73725mt that is down by -525mt.



ZINC

Zinc trading range for the day is 223.6-231.6.

Zinc prices gained amid expectations for stronger demand on the back of economic recovery and infrastructure spending are driving prices.

Prices for zinc, firmed on expectations of strong demand after the break, and as countries look to boost infrastructure spending

China's factory gate prices rose in annual terms in January for the first time in 12 months and at the fastest rate since May 2019

Warehouse stock for Zinc at LME was at 282100mt that is down by -1025mt.



NICKEL

Nickel trading range for the day is 1331.8-1384.2.

Nickel gains on expectations of sharp growth in sales of electric vehicles

Also, the stainless steel market, accounting for more than two-thirds of the total demand, is expected to remain strong in 2021.

Chinese imports of refined nickel fell by 32% year-on-year to 130,700 tonnes in 2020.

Warehouse stock for Nickel at LME was at 249990mt that is down by -66mt.



ALUMINIUM

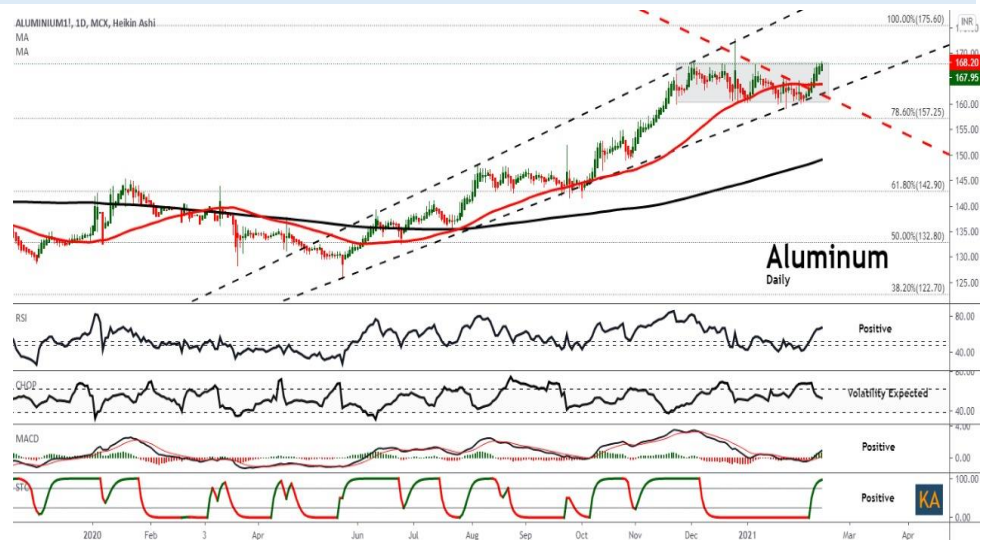
Aluminium trading range for the day is 166.4-169.6.

Aluminium prices seen supported as consumption shrank.

Stocks of aluminium billet across five major consumption areas in China increased by 37,400 tonnes on lower shipments

The producer price index (PPI) rose 0.3% from a year earlier, the National Bureau of Statistics said in a statement

Warehouse stock for Aluminium at LME was at 1372475mt that is down by -6850mt.



SPREAD SYNOPSIS

Copper				
Month	Rate	Feb	Mar	Apr
Feb	646.80		0.00	0.00
Mar	646.80			0.00
Apr	646.80			

Zinc				
Month	Rate	Feb	Mar	Apr
Feb	228.65		-4.70	-9.00
Mar	223.95			-4.30
Apr	219.65			

Spread History			
Commodity	Max	Min	Avg
Copper	-19.90	5.50	64.00
Zinc	-7.25	0.38	2.40
Nickel	-7.25	0.38	2.40
Aluminium	-7.10	1.17	3.10
Lead	-22.20	3.52	12.80

Nickel				
Month	Rate	Feb	Mar	Apr
Feb	1365.70		8.30	15.80
Mar	1374.00			7.50
Apr	1381.50			

Aluminium				
Month	Rate	Feb	Mar	Apr
Feb	168.45		-1.55	1.05
Mar	166.90			2.60
Apr	169.50			

COPPER PRICE MOVEMENT SINCE 2011

Year	JAN	FEB	MAR	APR	MAY	JUN	JUL	AUG	SEP	OCT	NOV	DEC	Growth
2011	451.90	445.75	425.30	415.90	417.35	421.10	436.85	427.10	349.80	392.95	409.75	406.00	-33.50
	2.82	-1.36	-4.59	-2.21	0.35	0.90	3.74	-2.23	-18.10	12.34	4.28	-0.92	-7.62
2012	417.15	417.70	431.65	443.90	420.25	429.40	422.55	424.30	441.05	419.70	436.30	443.75	37.75
	2.75	0.13	3.34	2.84	-5.33	2.18	-1.60	0.41	3.95	-4.84	3.96	1.71	9.30
2013	440.05	418.20	410.20	381.00	413.05	406.60	421.55	486.95	466.40	452.50	444.40	468.55	24.80
	-0.83	-4.97	-1.91	-7.12	8.41	-1.56	3.68	15.51	-4.22	-2.98	-1.79	5.43	5.59
2014	444.95	443.20	404.15	403.00	410.80	422.35	436.10	417.95	416.00	414.70	390.75	399.10	-69.45
	-5.04	-0.39	-8.81	-0.28	1.94	2.81	3.26	-4.16	-0.47	-0.31	-5.78	2.14	-14.82
2015	342.85	371.80	378.45	404.60	386.65	368.75	335.40	341.75	342.70	336.55	301.15	315.50	-83.60
	-14.09	8.44	1.79	6.91	-4.44	-4.63	-9.04	1.89	0.28	-1.79	-10.52	4.77	-20.95
2016	311.60	322.00	321.25	334.20	312.50	327.15	329.70	305.60	328.55	326.05	396.05	372.90	57.40
	-1.24	3.34	-0.23	4.03	-6.49	4.69	0.78	-7.31	7.51	-0.76	21.47	-5.85	18.19
2017	406.10	397.85	380.75	367.60	368.75	385.20	410.65	434.55	427.95	444.70	431.40	466.00	93.10
	8.90	-2.03	-4.30	-3.45	0.31	4.46	6.61	5.82	-1.52	3.91	-2.99	8.02	24.97
2018	450.90	446.00	436.80	449.40	457.05	446.15	430.15	414.00	452.95	435.70	433.10	407.75	-58.25
	-3.24	-1.09	-2.06	2.88	1.70	-2.38	-3.59	-3.75	9.41	-3.81	-0.60	-5.85	-12.50
2019	437.60	464.70	451.05	450.30	404.50	411.05	444.15	443.95	438.05	437.95	432.60	441.25	33.50
	7.32	6.19	-2.94	-0.17	-10.17	1.62	8.05	-0.05	-1.33	-0.02	-1.22	2.00	8.22
2020	427.25	421.80	376.80	403.45	416.20	464.70	500.75	527.30	525.20	526.40	582.30	594.70	153.45
	-3.17	-1.28	-10.67	7.07	3.16	11.65	7.76	5.30	-0.40	0.23	10.62	2.13	34.78
2021	596.40												1.70
	0.29												0.29

ZINC PRICE MOVEMENT SINCE 2011

Year	JAN	FEB	MAR	APR	MAY	JUN	JUL	AUG	SEP	OCT	NOV	DEC	Growth
2011	107.25	111.90	103.50	101.20	101.30	103.50	109.95	104.85	93.20	93.75	101.35	98.45	-10.55
	-1.61	4.34	-7.51	-2.22	0.10	2.17	6.23	-4.64	-11.11	0.59	8.11	-2.86	-9.68
2012	105.60	104.00	102.85	107.10	107.15	103.95	103.20	100.60	110.45	99.30	110.55	111.45	13.00
	7.26	-1.52	-1.11	4.13	0.05	-2.99	-0.72	-2.52	9.79	-10.10	11.33	0.81	13.20
2013	113.95	111.05	102.90	110.50	106.30	109.70	109.55	128.25	117.80	118.25	116.00	129.05	17.60
	2.24	-2.54	-7.34	7.39	-3.80	3.20	-0.14	17.07	-8.15	0.38	-1.90	11.25	15.79
2014	122.80	130.95	119.05	123.95	122.40	132.45	144.55	142.90	141.10	143.40	138.00	137.20	8.15
	-4.84	6.64	-9.09	4.12	-1.25	8.21	9.14	-1.14	-1.26	1.63	-3.77	-0.58	6.32
2015	130.40	127.70	129.90	149.75	141.05	127.10	122.85	121.30	108.90	109.10	103.20	106.15	-31.05
	-4.96	-2.07	1.72	15.28	-5.81	-9.89	-3.34	-1.26	-10.22	0.18	-5.41	2.86	-22.63
2016	109.25	122.45	118.40	129.20	129.30	142.15	148.80	155.90	158.10	163.90	185.55	173.80	67.65
	2.92	12.08	-3.31	9.12	0.08	9.94	4.68	4.77	1.41	3.67	13.21	-6.33	63.73
2017	193.10	187.70	180.40	169.45	165.95	178.25	179.50	200.95	210.20	215.05	205.95	207.60	33.80
	11.10	-2.80	-3.89	-6.07	-2.07	7.41	0.70	11.95	4.60	2.31	-4.23	0.80	19.45
2018	228.60	227.75	214.10	211.75	209.05	202.15	180.40	176.10	186.65	192.60	180.20	171.95	-35.65
	10.12	-0.37	-5.99	-1.10	-1.28	-3.30	-10.76	-2.38	5.99	3.19	-6.44	-4.58	-17.17
2019	195.15	197.80	221.35	223.20	203.00	200.50	192.25	185.30	185.55	187.85	185.05	179.00	7.05
	13.49	1.36	11.91	0.84	-9.05	-1.23	-4.11	-3.62	0.13	1.24	-1.49	-3.27	4.10
2020	174.45	154.85	145.50	150.60	159.00	163.50	184.00	196.05	190.80	201.80	220.20	214.40	35.40
	-2.54	-11.24	-6.04	3.51	5.58	2.83	12.54	6.55	-2.68	5.77	9.12	-2.63	11.81
2021	205.90												-8.50
	-3.96												11.81

NICKEL PRICE MOVEMENT SINCE 2011

Year	JAN	FEB	MAR	APR	MAY	JUN	JUL	AUG	SEP	OCT	NOV	DEC	Growth
2011	1243.90	1294.00	1165.40	1202.40	1045.80	1037.70	1098.80	1022.90	898.80	940.90	869.60	992.20	-119.60
	11.88	4.03	-9.94	3.17	-13.02	-0.77	5.89	-6.91	-12.13	4.68	-7.58	14.10	-10.76
2012	1050.20	974.30	927.40	936.60	923.80	935.40	892.80	884.40	978.50	878.50	931.70	935.70	-56.50
	5.85	-7.23	-4.81	0.99	-1.37	1.26	-4.55	-0.94	10.64	-10.22	6.06	0.43	-5.69
2013	979.10	895.70	921.50	824.00	826.70	823.90	829.20	928.20	869.80	892.20	836.90	864.50	-71.20
	4.64	-8.52	2.88	-10.58	0.33	-0.34	0.64	11.94	-6.29	2.58	-6.20	3.30	-7.61
2014	855.80	902.80	945.50	1097.40	1139.60	1124.30	1130.40	1140.30	1016.80	971.00	996.80	945.70	81.20
	-1.01	5.49	4.73	16.07	3.85	-1.34	0.54	0.88	-10.83	-4.50	2.66	-5.13	9.49
2015	922.90	874.90	779.70	881.00	808.00	744.50	698.50	668.10	661.90	660.90	583.50	582.00	-363.70
	-2.41	-5.20	-10.88	12.99	-8.29	-7.86	-6.18	-4.35	-0.93	-0.15	-11.71	-0.26	-38.46
2016	579.80	577.60	549.10	629.10	568.50	636.40	700.00	651.20	703.30	696.30	751.20	706.00	169.20
	-0.38	-0.38	-4.93	14.57	-9.63	11.94	9.99	-6.97	8.00	-1.00	7.88	-6.02	29.07
2017	670.30	725.30	640.10	608.90	568.50	600.60	655.70	743.70	692.60	766.30	727.50	783.40	77.40
	-5.06	8.21	-11.75	-4.87	-6.63	5.65	9.17	13.42	-6.87	10.64	-5.06	7.68	10.96
2018	863.10	898.30	840.50	926.40	1024.40	1022.30	944.00	909.30	905.00	860.00	774.80	741.60	-41.80
	10.17	4.08	-6.43	10.22	10.58	-0.20	-7.66	-3.68	-0.47	-4.97	-9.91	-4.28	-5.34
2019	884.90	931.10	904.00	854.60	876.50	906.00	1013.50	1245.40	1216.80	1200.40	1006	1029	287.6
	19.32	5.22	-2.91	-5.46	2.56	3.37	11.87	22.88	-2.30	-1.35	-16.24	2.36	38.78
2020	943.80	901.00	860.10	922.60	940.40	975.00	1041.90	1135.70	1065.30	1142.70	1206.70	1212.20	183.0
	-8.30	-4.53	-4.54	7.27	1.93	3.68	6.86	9.00	-6.20	7.27	5.60	0.46	17.78
2021	1286.90												74.7
	6.16												6.16

ALUMINIUM PRICE MOVEMENT SINCE 2011

Year	JAN	FEB	MAR	APR	MAY	JUN	JUL	AUG	SEP	OCT	NOV	DEC	Growth
2011	114.05	114.35	116.05	122.55	119.25	112.20	115.55	112.60	107.95	106.85	103.10	106.95	-3.20
	3.54	0.26	1.49	5.60	-2.69	-5.91	2.99	-2.55	-4.13	-1.02	-3.51	3.73	-2.91
2012	112.15	112.65	108.35	108.05	111.35	105.65	103.95	103.00	110.95	101.85	113.35	111.75	4.80
	4.86	0.45	-3.82	-0.28	3.05	-5.12	-1.61	-0.91	7.72	-8.20	11.29	-1.41	4.49
2013	110.50	105.40	103.65	100.10	105.95	105.05	105.85	122.10	113.15	112.55	106.75	109.20	-2.55
	-1.12	-4.62	-1.66	-3.42	5.84	-0.85	0.76	15.35	-7.33	-0.53	-5.15	2.30	-2.28
2014	103.90	107.00	104.00	106.75	107.65	111.20	121.45	126.70	119.20	126.85	128.35	116.00	6.80
	-4.85	2.98	-2.80	2.64	0.84	3.30	9.22	4.32	-5.92	6.42	1.18	-9.62	6.23
2015	113.45	112.40	111.95	121.40	108.75	104.95	102.00	107.15	102.60	94.40	96.35	100.15	-15.85
	-2.20	-0.93	-0.40	8.44	-10.42	-3.49	-2.81	5.05	-4.25	-7.99	2.07	3.94	-13.66
2016	103.80	111.25	98.90	111.25	104.00	110.55	108.30	107.20	110.55	115.95	118.00	117.20	17.05
	3.64	7.18	-11.10	12.49	-6.52	6.30	-2.04	-1.02	3.12	4.88	1.77	-0.68	17.02
2017	123.40	126.45	126.20	123.90	123.90	123.55	121.95	135.30	137.90	138.60	131.00	143.30	26.10
	5.29	2.47	-0.20	-1.82	0.00	-0.28	-1.30	10.95	1.92	0.51	-5.48	9.39	22.27
2018	141.65	140.50	130.65	148.50	154.15	149.70	141.40	150.10	145.90	143.95	137.20	128.15	-15.15
	-1.15	-0.81	-7.01	13.66	3.80	-2.89	-5.54	6.15	-2.80	-1.34	-4.69	-6.60	-10.57
2019	136.00	151.10	149.15	146.20	145.35	143.20	140.35	138.70	134.60	132.00	133.55	137.25	9.10
	6.13	11.10	-1.29	-1.98	-0.58	-1.48	-1.99	-1.18	-2.96	-1.93	1.17	2.77	7.10
2020	139.10	136.70	134.45	131.00	131.70	137.95	140.90	146.15	143.80	152.95	167.05	160.95	23.70
	1.35	-1.73	-1.65	-2.57	0.53	4.75	2.14	3.73	-1.61	6.36	9.22	-3.65	17.27
2021	162.25												1.30
	0.81												0.81

The logo for KEDIA ADVISORY is displayed within a dark blue rectangular box. The word "KEDIA" is written in a yellow, sans-serif font, and "ADVISORY" is written in a white, sans-serif font.

KEDIA STOCKS & COMMODITIES RESEARCH PVT LTD.
Mumbai. INDIA.

For more details, please contact:

Mobile: +91 9323406035 / 9320096333 / 9619551022

Email: info@kediaadvisory.com

URL: www.kediaadvisory.com

SEBI REGISTRATION NUMBER - INH000006156

General Disclaimers: This Report is prepared and distributed by Kedia Stocks & Commodities Research Pvt Ltd. for information purposes only. The recommendations, if any, made herein are expression of views and/or opinions and should not be deemed or construed to be neither advice for the purpose of purchase or sale through KSCRPL nor any solicitation or offering of any investment /trading opportunity. These information / opinions / views are not meant to serve as a professional investment guide for the readers. No action is solicited based upon the information provided herein. Recipients of this Report should rely on information/data arising out of their own investigations. Readers are advised to seek independent professional advice and arrive at an informed trading/investment decision before executing any trades or making any investments. This Report has been prepared on the basis of publicly available information, internally developed data and other sources believed by KSCRPL to be reliable. KSCRPL or its directors, employees, affiliates or representatives do not assume any responsibility for, or warrant the accuracy, completeness, adequacy and reliability of such information / opinions / views. While due care has been taken to ensure that the disclosures and opinions given are fair and reasonable, none of the directors, employees, affiliates or representatives of KSCRPL shall be liable for any direct, indirect, special, incidental, consequential, punitive or exemplary damages, including lost profits arising in any way whatsoever from the information / opinions / views contained in this Report. The possession, circulation and/or distribution of this Report may be restricted or regulated in certain jurisdictions by appropriate laws. No action has been or will be taken by KSCRPL in any jurisdiction (other than India), where any action for such purpose(s) is required. Accordingly, this Report shall not be possessed, circulated and/ or distributed in any such country or jurisdiction unless such action is in compliance with all applicable laws and regulations of such country or jurisdiction. KSCRPL requires such recipient to inform himself about and to observe any restrictions at his own expense, without any liability to KSCRPL. Any dispute arising out of this Report shall be subject to the exclusive jurisdiction of the Courts in India.